

Storage

- Store products at room temperature and keep away from the sunlight.
- After collecting the sample, store the transport medium tube under 4°C to deliver for subsequent tests.

Precautions for use

- Since this product is supplied on sterile condition, do not use the product that has been opened or damaged.
- This product is only for single-use. Do not reuse or re-sterilize.
- Use with care as the handle part of the swab may break when excessive force is applied when collecting samples.
- Once opened, use the product immediately and use only at room temperature. After collecting the sample, perform the subsequent test according to the test protocol without any delay.
- Do not ingest the medium. In case the reagent contacts with eyes or skin, wash the contact area thoroughly with water.
- Reagents containing clinical samples are at risk of infection. Therefore, be sure to wear protective gear.
- Dispose used products by classifying them as medical waste.
- This product is only used for *in vitro* diagnosis (for healthcare professionals), so do not use other than the intended use.

Ordering Information

Product name	REF	Product Composition		Unit
		Tube	Swab	
LASwab TM kit	LKD8STM1	LAS Transport Medium™ (2 mL)	LASwab™ Dual (nasopharynx +Throat)	50 EA / box 10 box / carton

LASwab TM Kit™

Collection and transportation of virus, chlamydia, mycoplasma & ureaplasma specimens



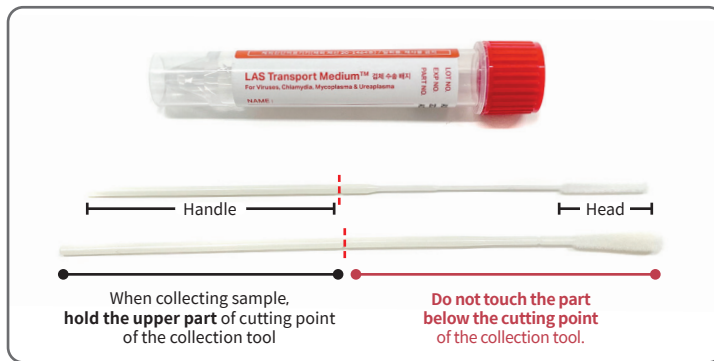
LASwab TM kit [In vitro No. 20-1547]

Intended Use

LASwab™ kit is an *in vitro* diagnostic medical device for the purpose of disease diagnosis. It is used to collect and transport samples for pathogen (virus, chlamydia, mycoplasma, urea plasma, etc.). It can also be used for preservation of collected samples.

Product Description

- Sample collection tool; two kinds of flocked swab (For nasopharynx and throat)
- Sample transport medium; activation medium



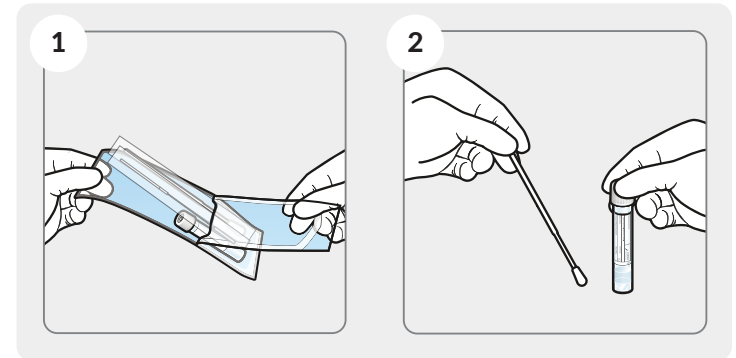
┆ Groove to break the swab (break point)

Handle : Handle part

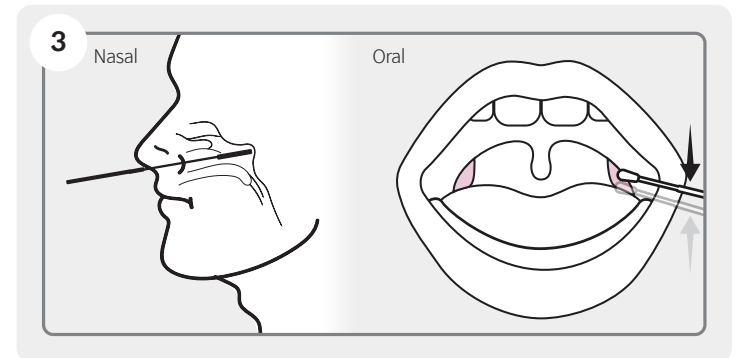
Head : Sample collection part

Model	Classification	Model name	Product liscence No.	Product description	Volume /Weight
LASwab™ kit	Sample transport medium	LAS Transport Medium™	<i>In vitro</i> No. 20-1547	one transparent liquid reagent	2 mL
	Sample collection tool	LASwab™ Dual	No. 20-1477	Flocked swab in two different shapes	8.5 g 9.5 g

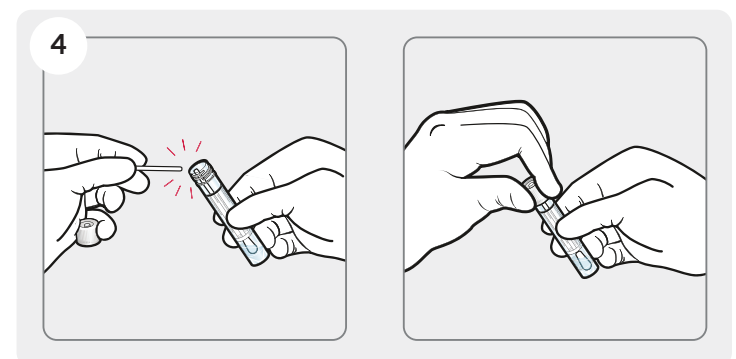
Direction for Use



1. Take out the collection tool and transport medium tube.
2. Open the package of the collection tool, hold the handle, and take it out carefully so that it does not get contaminated.



3. Collect a sample within a short time from the target spot to be sampled.
*When collecting samples, do not put excessive force on the collection tool to prevent the collection tool from accidentally breaking in the body cavity.



4. When the sample is collected, put the collection tool into the transport medium tube. Break the collection tool by forcing the break point in the transport medium tube. Close the lid of the transport medium tube and keep the transport medium tube under 4°C before delivery.